



Technic

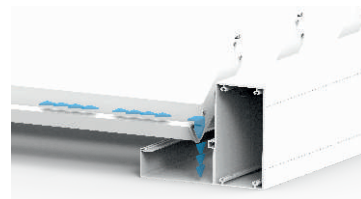
- product card

The Tarasola Technic - an elegant pavilion with a modernistic appearance and design. It is the most advanced model in our range, with the roof opened automatically, through the rotation of aluminium louvres which move from an angle of 0° through to 135°. The ability to rotate the louvres to a precise position provides the ability to control the amount of sunlight and ventilation, adapting the pergola roof to the angle of the sun. Its robust construction can withstand most weather conditions. It can come with additional accessories, such as LED lighting, sliding glass and roller blinds that protect you from wind, rain and strong sunlight. It allows you to enjoy the pergola almost all of the year.

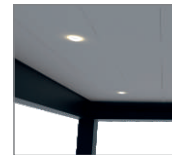


SPECIFICATION

- Construction made from corrosion resistant extruded aluminium and stainless steel.
- Electric motor control included in the price.
- Water drainage system included in the price.
- Possibility of powder coating in any RAL colour.
- Louvres rotate from 0° to 135°.
- Option of modular connection.
- Option of additional accessories:
 - lighting - LED spotlights or LED strip lights,
 - glazing,
 - roller blinds (screeners),
 - infrared heaters,
 - wind, rain and temperature sensors.



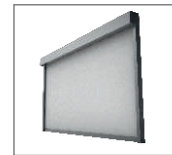
Infrared heaters



LED lighting - spotlights



LED lighting - LED strip lights, integrated with the gutter



Roller blinds (screeners)



Glazing



COLOURS

CONSTRUCTION



9010ST
Colour cream-white
similar to RAL9010
(in set)



9007
Colour Grey aluminium
RAL9007 (in set)



7016ST
Colour anthracite-metallic
similar to RAL7016
(in set)

ADDITIONAL COLOURS



Any colour from the
RAL palette
(extra charge + 8%)



Wood-like varnish
(extra charge + 15%)

LOUVRES



9010ST
Colour cream-white
similar to RAL9010
(in set)



9010
Colour cream-white
similar to RAL9010
(in set)



9007
Colour Grey aluminium
RAL9007 (in set)



7016ST
Colour anthracite-metallic
RAL7016 (in set)

ADDITIONAL COLOURS



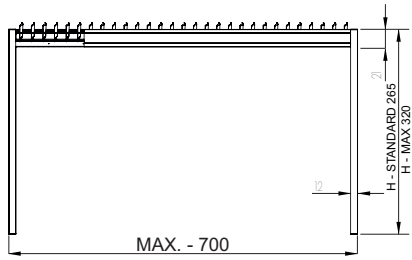
Any colour from the
RAL palette
(extra charge + 12%)



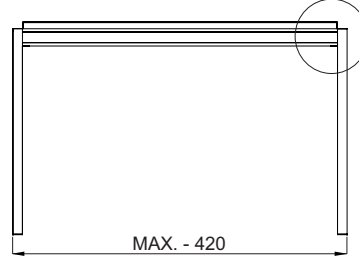
Wood-like varnish
(extra charge + 20%)

The Machinery Directive 2006/42/EC of the EU Parliament and of the Council,
PN - EN 13561 + A1: 2010 EXTERNAL BLINDS - operational requirements
Regulation of the construction products; CPR 305/2011; EUROCODE

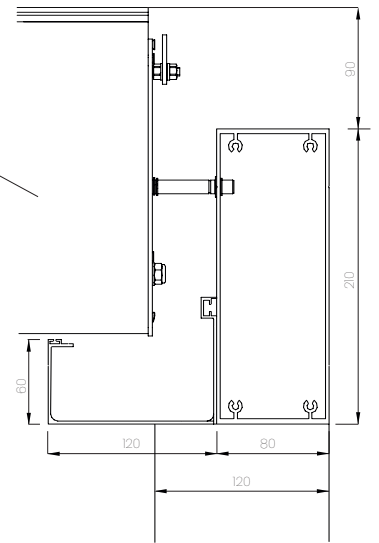
PROJECTION (cm)



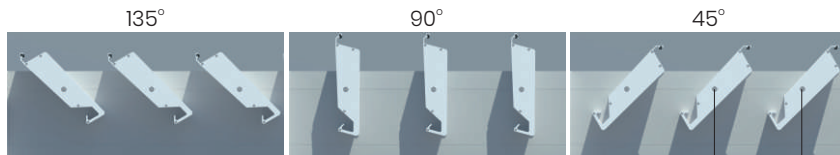
WIDTH (cm)



CROSS-SECTION

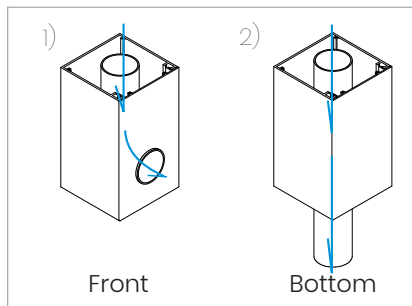


LOUVRES ROTATION

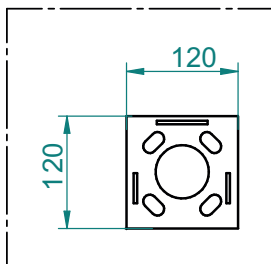


LOUVRES SPACING

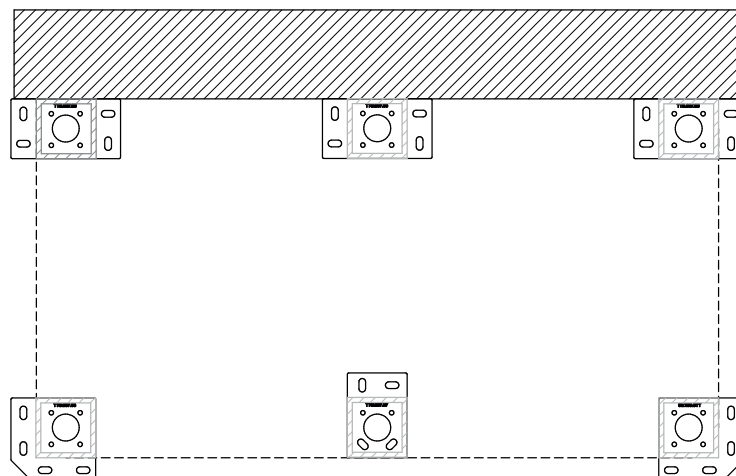
WATER DRAINAGE



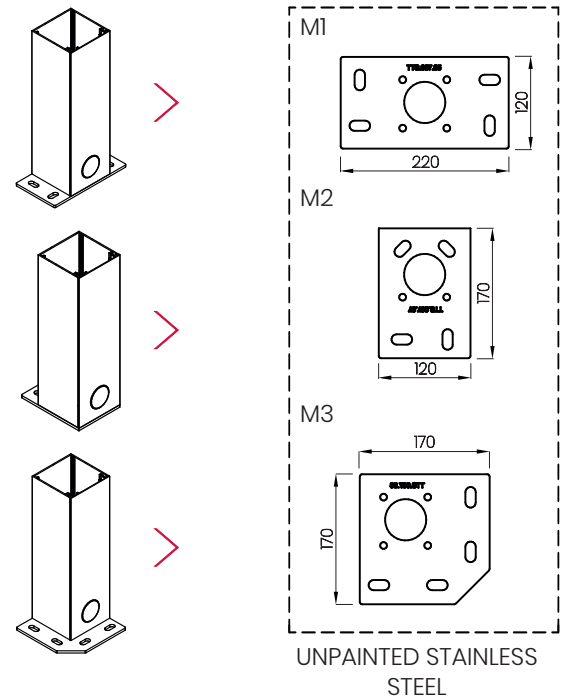
FIXING PLATE - INTERNAL - STANDARD



LAYOUT EXAMPLES



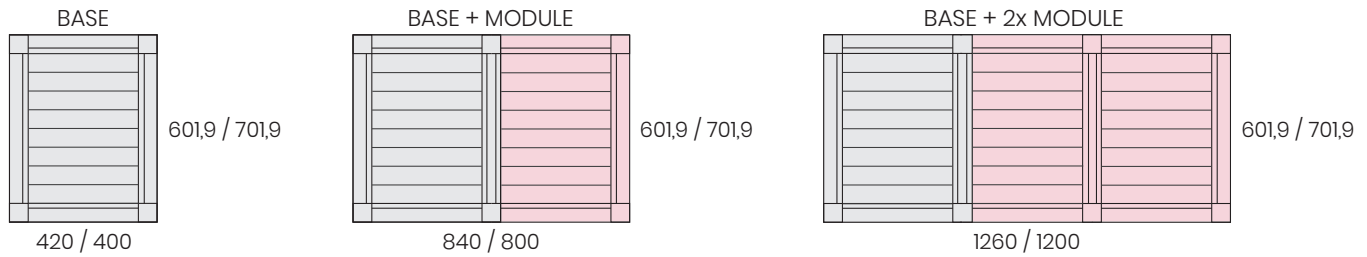
FIXING PLATE - EXTERNAL



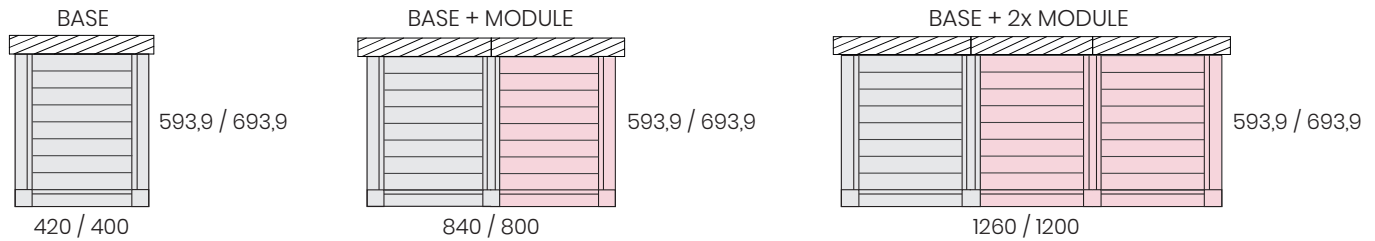
PROJECTION TABLE (cm)

101,9	121,9	141,9	161,9	181,9	201,9	93,9	113,9	133,9	153,9	173,9	193,9
221,9	241,9	261,9	281,9	301,9	321,9	213,9	233,9	253,9	273,9	293,9	313,9
341,9	361,9	381,9	401,9	421,9	441,9	333,9	353,9	373,9	393,9	413,9	433,9
461,9	481,9	501,9	521,9	541,9	561,9	453,9	473,9	493,9	513,9	533,9	553,9
581,9	601,9	620,9	641,9	661,9	681,9	573,9	593,9	613,9	633,9	653,9	673,9
701,9	Model: TECHNIC PAVILON, TECHNIC GARDENA - PLUS, TECHNIC GARDENA - PLUS - LOUVRES PERPENDICULAR					693,9	Model: TECHNIC GARDENA				

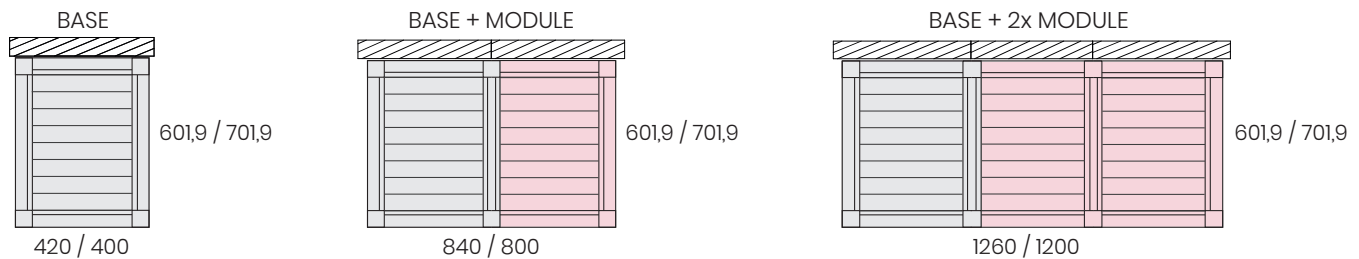
TECHNIC PAVILON / TENDE



TECHNIC GARDENA



TECHNIC GARDENA PLUS



TECHNIC GARDENA PLUS (PERPENDICULAR LOUVRES)

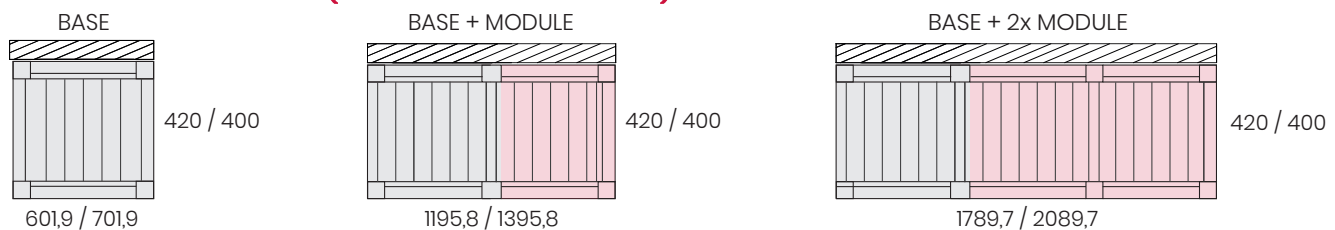


TABLE FOR THE SNOW LOAD WITHOUT WIND PRESSURE FOR A STRUCTURE STANDING ON 4 PILLARS (kg/m²)

projection (cm)	number of louvres	width (cm)						
		220	270	295	330	365	400	420
200	9	620	490	350	290	180	150	120
300	14	590	450	310	190	160	150	120
400	19	450	430	290	180	170	140	120
500	24	420	340	250	165	160	120	120
600	29	240	220	165	130	130	120	120
700	34	220	160	140	120	120	120	

Colours

9010 White
9010ST White structured
9007 Grey aluminium
7016ST Anthracite structured

Any RAL colour
Wood-like varnish

Controls

Motor

24 V DC Wired motor with power supply 150 W

Controls TELECO

24V DC radio control unit for 1 motor

Optional sensors:

- * wind
- * rain
- * temperature
- * combination of temperature & rain sensors to detect snow

24 V DC radio control unit for 1-2 motors, integrated with LED receiver
(max. 75 pc LED spotlights)

Optional sensors:

- * wind
- * rain
- * temperature
- * combination of temperature & rain sensors to detect snow

Additional 150 W power supply

Remote control TELECO

42 channel remote control, white / black

Sensors

Wind

Rain

Temperature

Rain and temperature sensors to detect snow

Lighting



LED lighting - spotlights

LED spotlights

Min. 8 LED spotlights on whole construction, min. 3 LED spotlights on a louvres.



LED lighting - LED strip lights, integrated with the gutter

LED strip 8W - White

LED strip RGB 8W

Controler white/RGB TELECO up to 28 m (max. 4 pc LED strip)

Power supply up to 18 m

Power supply from 18-36 m

Audio System TELECO

Audio controlled via Bluetooth

Speaker 25 W

The speakers are built into the frame, diameter 10 cm. Works with the Audio Bluetooth control system.

Smartphone control



DAISY TELECO

Infrared heaters

power

Infrared heater GR1 - controlled by a switch with a LOW GLARE emitter that generates less light, water-tight class IP65, colour: white or black, usually controlled by a wall switch. For external use.*

1,5 kW

Infrared heater GR2 IR - a infrared heater with a built-in infrared receiver, remote control and a LOW GLARE emitter that releases less light. Water-tight class IP65, colour white or black, controlled by an infrared remote control (in set). For external use.

1,5 kW

Additional infrared remote control

Radio receivers for infrared heaters GR1

*Control Unit for 1-2 infrared heaters 3 kW

Gr1 infrared heater can be operated by TELECO 42-channel remote control on/off.



Contact:

phone: +48 607 189 400

+48 502 342 842

e-mail: export@tarasola.com

www.tarasola.com